

Features

Individual addressable manual fire alarm call points include the following features:

- IDNet™ addressable communications that supply power and data through a single wire pair
 - Fast and easy installation
 - EMI compatibility
 - Surface or flush mounting options
 - Key for testing the call point without breaking the glass
 - Key for opening the call point
 - Approved to UL 38
- Compatible with Simplex™ model series 4007ES, 4010ES and 4100ES

Description

The IDNet addressable manual call points are suitable for demanding applications. The call points include a compact communications module. An integral individual addressable module (IAM) monitors status and communicates changes to the connected control unit through IDNet communications.

Specifications

Specifications	Rating
Power and communications	IDNet, one address for each call point
Address means	DIP switch, 8 position
Wire connections	Spade terminals
Operating temperature range	14°F to 131°F or -10°C to 55°C
Humidity range	Up to 90% RH non-condensing
Ingress protection	IP24D
Color	Red, RAL3001
Material	Flame retardant ABS
Dimensions (H x W x D)	3 5/8 in. x 3 1/2 in. x 1 1/16 in. 93 mm x 89 mm x 27 mm



Figure 1: IDNet addressable manual call point

Operation

Activation: To activate the Simplex call point, break the glass element. When you break the glass, a micro-switch signals the condition back to the control unit.

Call point reset: To reset the call point, use the supplied key to remove the front cover and replace the glass element.

Call point testing: To test the call point, insert the supplied key fully into the bottom of the housing and pull downward to release the bottom of the housing and the glass element. To reset the call point, push the bottom of the housing upwards until it locks in position, see Figure 2.

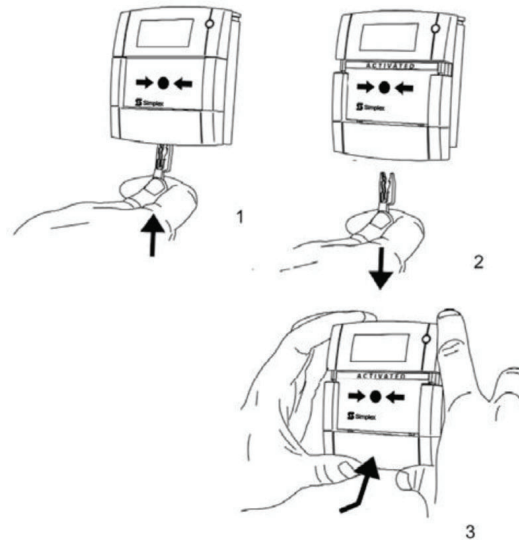


Figure 2: Call point testing

Application reference

Refer to NFPA 72, the *National Fire Alarm Code*, and all applicable local codes for complete requirements for manual call points. The following summarizes the basic requirements:

1. Locate call points in the normal path of an exit. Distribute call points in the protected area such that they are unobstructed and readily accessible.
2. When you mount the device, ensure that the operable part is not less than 3 1/2 ft (1.1 m) and not more than 4 1/2 ft (1.37 m) above floor level.
3. Provide at least one call point on each floor. Provide additional call points to obtain a travel distance not more than 200 ft (61 m) to the nearest call point from any part of the building.
4. Install additional call points when manual call point coverage appears limited in any way.

Product selection

Addressable manual call points with internal IAM

Table 1: Addressable manual call points with internal IAM

Model	Description
4099-9708	English call point with LED

Accessories

Table 2: Accessories

Model	Description
4099-9711	Surface mount back box for Simplex internal call points, 32 mm deep, 1 1/4 in.
4099-9706	Call point replacement glass, package of 10

Mounting information

Note: The call point fits directly to a UK switch or socket box. A minimum box depth of 25 mm is recommended.

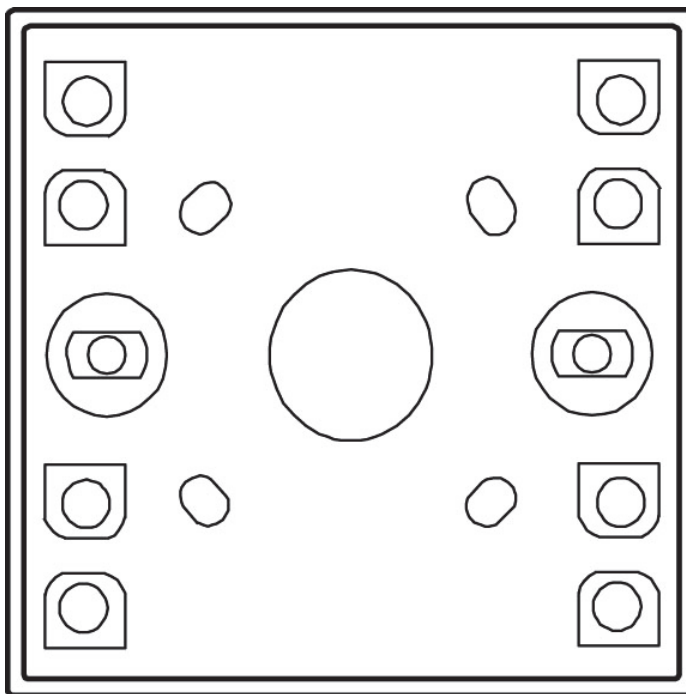


Figure 3: A4099-9711 Flame retardant ABS back box for surface mounting

Replacing the break glass element

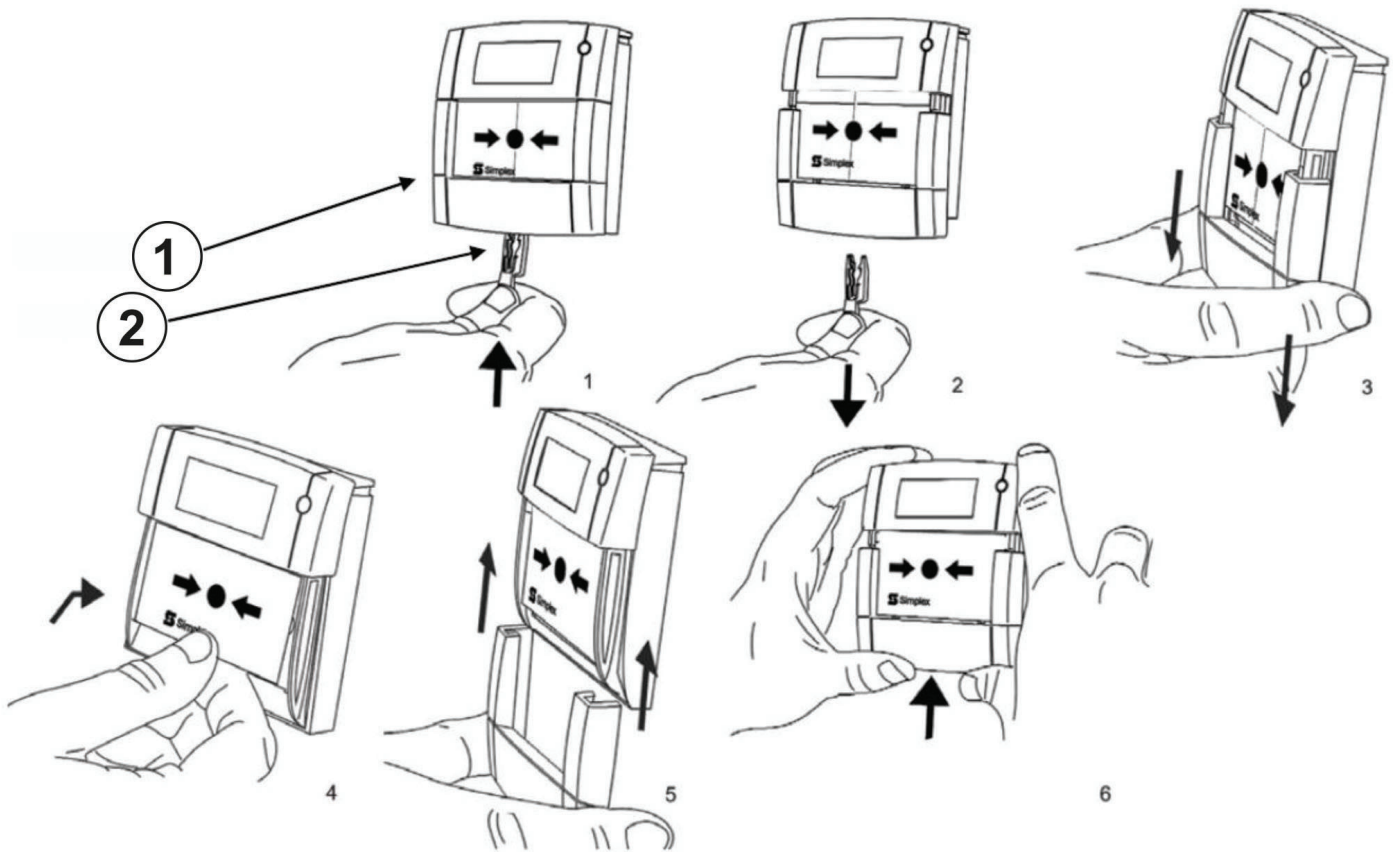


Figure 4: Replacing the break glass element

Callouts	Description
1	Break glass
2	Key hole

